

A BRIEF ABSTRACT OF THE
SYMBOLIC REPRESENTATION

OF THE

UNIVERSE

DERIVED BY DOCTOR JOHN DEE

THROUGH THE SKRYING OF

SIR EDWARD KELLY

[PREFATORY NOTE BY THE EDITOR

We omit in this preliminary sketch any account of the Tables of Soyga, the Heptarchia Mystica, the Book of Enoch, or Liber Logaeth. We hope to be able to deal with these adequately in a subsequent article.]

The HOLY TABLE.

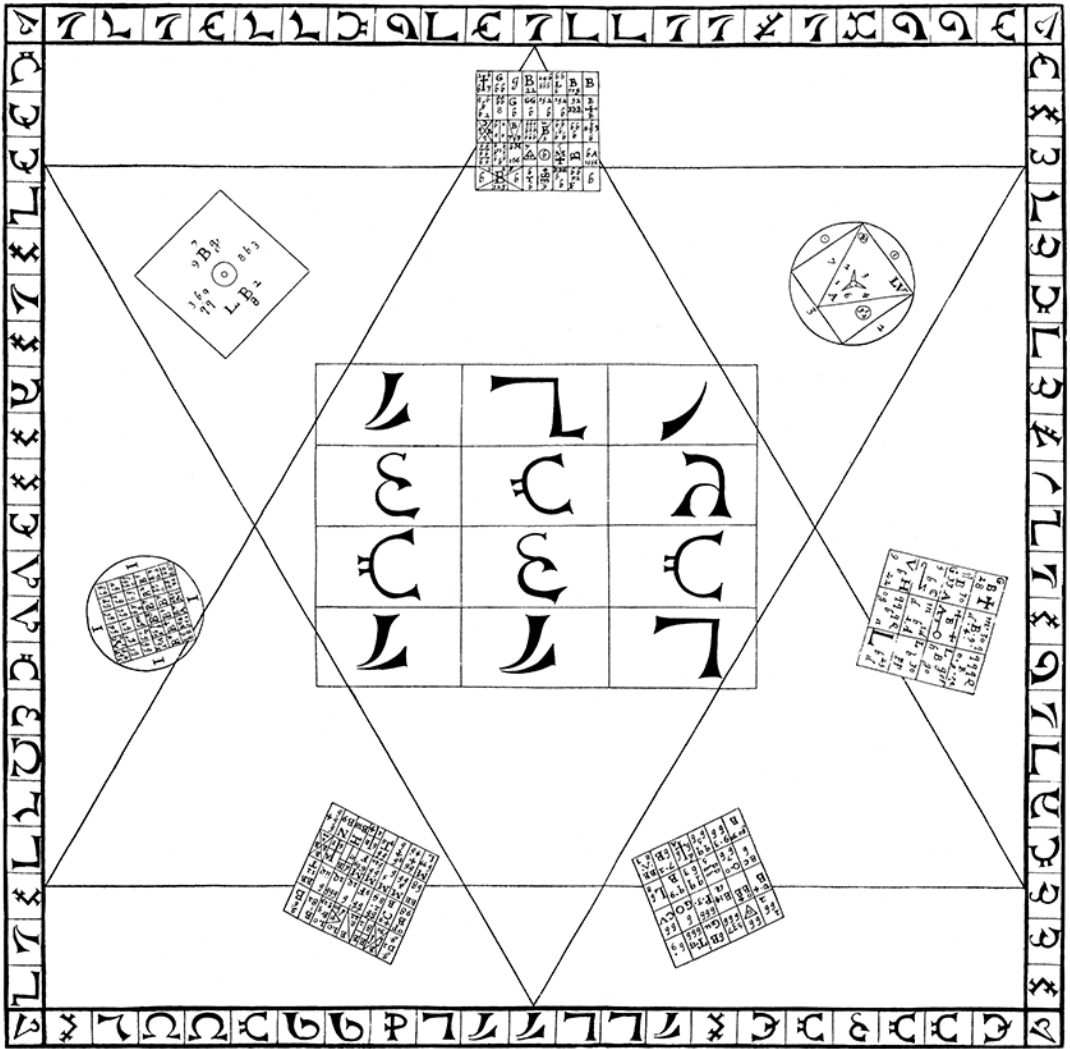


PLATE I.

The Skryer obtained from certain Angels a series of seven talismans. These, grouped about the Holy Twelfold Table, similarly obtained, were part of the furniture of the Holy Table, as shewn in Plate I., opposite.

Other appurtenances of this table will be described hereafter.

II

Other Pantacles were obtained in a similar manner. Here (Plate II.) is the principal one, which, carved in wax, was placed upon the top of the table. On four others stood the feet of the table.

Note first the Holy Sevenfold Table containing seven Names of God which not even the Angels are able to pronounce.

SAAI²¹/₈EME.
 BTZKASE³⁰.
 HEIDENE
 DEIMOL³⁰.A
 I₂₆MEGCBE
 ILAOI²¹/₈VN
 IHLAAL²¹/₈

These names are seen written without the heptagram within the heptagon.

THE EQUINOX

By reading these obliquely are obtained names of Angels called—

(1) Filiae Bonitatis or Filiolæ Lucis.

E

Me

Ese

Iana

Akele

Azdobn

Stimcul

(2) Filii Lucis.

I

Ih

Ilr

Dmal

Heeo

Beigia

Stimcul

[These are given attributions to the Metals of the Planets in this order : Sol, Luna, Venus, Jupiter, Mars, Mercury, Saturn.]

(3) Filiae Filiarum Lucis.

S

Ab

Ath

Ized

Ekiei

Madimi

Esemeli

SIGILLVM DEI ÆMETH.



PLATE II.

KELLY'S UNIVERSE

(4) Filii Filiorum Lucis.

L (El)

Aw

Ave

Liba

Iocle

Hagone(l)

Ilemese

See all these names in the heptagram of the great seal.

So also there are Seven Great Angels formed thus : take the corner letter S, then the diagonal next to it AB, then the next diagonal ATH, then the fourth diagonal, where is I with $\frac{2}{8}$ (which indicates EL), and we have the name—

SABATHIEL

Continuing the process, we get

ZEDEKIEL

MADIMIEL

SEMELIEL

NOGAHEL

CORABIEL

LEVANAEL

These names will be found in the Pentagram and about it.

These angels are the angels of the Seven Circles of Heaven.

These are but a few of the mysteries of this great seal

SIGILLVM DEI ÆMETH

III

The Shew-stone, a crystal which Dee alleged to have been brought to him by angels, was then placed upon this

THE EQUINOX

table, and the principal result of the ceremonial skrying of Sir Edward Kelly is the obtaining of the following diagrams, Plates III.-VIII.

He symbolized the Fourth-Dimensional Universe in two dimensions as a square surrounded by 30 concentric circles (the 30 Æthyrs or Aires) whose radii increase in a geometrical proportion.

The sides of the square are the four great watch-towers (Plates IV.-VII.) which are attributed to the elements. There is also a "black cross" (or "central tablet" according to the arrangement shewn—compare the black cross bordering the tablets in Plate III. with Plate VIII.).

Plate III. gives the general view.

[The reversed letters which form the word PARAOAN are written in Enochian for convenience, as our A and O are not distinguishable reverse from forward.]

Plate IV. gives the complete attribution of the tablet of Air.

The 6th file is called Linea Patris.

The 7th file is called Linea Filii.

The 7th line is called Linea Spiritus Sancti.

This great cross divides the Tablet into four lesser (sub-elemental) Tablets, the left-hand top corner being Air of Air, the right-hand top corner Water of Air, the left-hand bottom corner Earth of Air, the remaining corner Fire of Air.

Each of these lesser Tablets contains a Calvary Cross of ten squares, which governs it.

Plates V., VI., and VII. are similar for the other elements.

This is the way in which the names are drawn from the great Tablets. [Examples taken from Water Tablet.]

THE FOUR GREAT WATCH-TOWERS AND THE BLACK CROSS
WITHIN GENERAL VIEW.

| | | | | | | | | | | | | | | | | | | | | | | | | |
|---|---|---|---|---|---|---|---|---|---|---|---|---|---|---|---|---|---|---|---|---|---|---|---|---|
| r | Z | i | l | a | f | ϣ | y | t | l | p | a | ε | τ | a | O | ϣ | d | v | p | t | D | η | i | μ |
| a | r | d | Z | a | i | d | p | a | L | a | μ | | a | a | l | c | o | o | r | o | μ | ε | b | b |
| c | z | o | η | s | a | r | o | Υ | a | u | b | x | τ | o | g | c | o | η | z | i | η | l | G | μ |
| τ | o | i | τ | t | x | o | P | a | c | o | C | a | η | h | o | d | D | i | a | l | a | a | o | c |
| S | i | g | a | s | o | μ | r | b | z | η | h | r | p | a | t | ϣ | x | i | o | Υ | s | P | s | ε |
| f | μ | o | η | d | a | τ | d | i | a | r | i | p | S | a | a | i | z | a | a | r | Υ | r | o | i |
| o | r | o | i | b | ϣ | h | a | o | z | p | i | | μ | p | h | a | r | s | l | g | a | i | o | l |
| c | N | a | b | a | Υ | i | x | g | a | z | d | h | M | a | μ | g | l | o | i | η | L | i | r | x |
| l | i | i | i | t | τ | p | a | l | O | a | i | | o | l | a | a | D | a | g | a | τ | a | p | a |
| ξ | b | a | μ | o | o | a | C | u | c | a | C | p | a | L | c | o | i | d | x | P | a | c | η | |
| N | a | o | c | O | T | t | η | p | r | a | τ | o | η | d | a | z | N | z | i | U | a | a | s | a |
| o | c | a | η | m | a | g | o | t | r | o | i | μ | i | i | d | P | o | η | s | d | ϣ | s | p | i |
| S | h | i | a | l | r | a | p | μ | z | o | x | a | x | r | i | η | h | t | a | r | η | d | i | ε |
| μ | o | t | i | b | | | a | τ | η | a | η | | η | a | η | τ | a | | | b | i | ε | o | μ |
| b | O | a | Z | a | R | o | p | h | a | R | a | a | d | o | η | p | a | τ | d | a | η | Υ | a | a |
| u | N | η | a | x | o | P | S | o | η | d | η | | o | l | o | a | ε | o | o | b | a | v | a | |
| a | i | g | r | a | η | o | o | μ | a | g | g | μ | O | P | a | μ | η | o | O | G | μ | d | η | μ |
| o | r | b | μ | η | i | η | g | b | e | a | l | o | a | b | l | s | τ | ε | d | ε | c | a | o | p |
| r | s | O | η | i | z | i | r | l | e | μ | u | C | s | c | μ | i | a | o | η | ϣ | μ | l | o | x |
| i | z | i | η | r | C | z | i | a | M | h | l | h | Υ | a | r | s | G | d | L | b | r | i | a | p |
| M | O | r | d | i | a | l | h | C | t | G | a | | o | i | P | t | ε | a | a | p | D | o | c | ε |
| Ξ | O | a | η | c | c | h | i | a | s | o | μ | p | p | s | u | a | c | η | r | Z | i | r | Z | a |
| ξ | r | b | i | z | μ | i | l | p | i | z | | | S | i | o | d | a | o | i | η | r | z | f | μ |
| O | p | a | η | a | B | a | μ | S | μ | a | L | r | d | a | l | t | τ | d | η | a | d | i | r | ε |
| d | O | l | o | P | i | η | i | a | η | b | a | a | d | i | x | o | μ | o | η | s | i | o | s | p |
| r | x | p | a | o | c | s | i | z | i | x | p | x | O | o | D | p | z | i | ϣ | p | a | η | l | i |
| a | x | t | i | r | Υ | a | s | t | r | i | μ | ε | r | g | o | a | η | η | Ω | ξ | C | r | a | r |

PLATE III.

THE GREAT WATCH-TOWER OF THE EAST, ATTRIBUTED TO AIR.

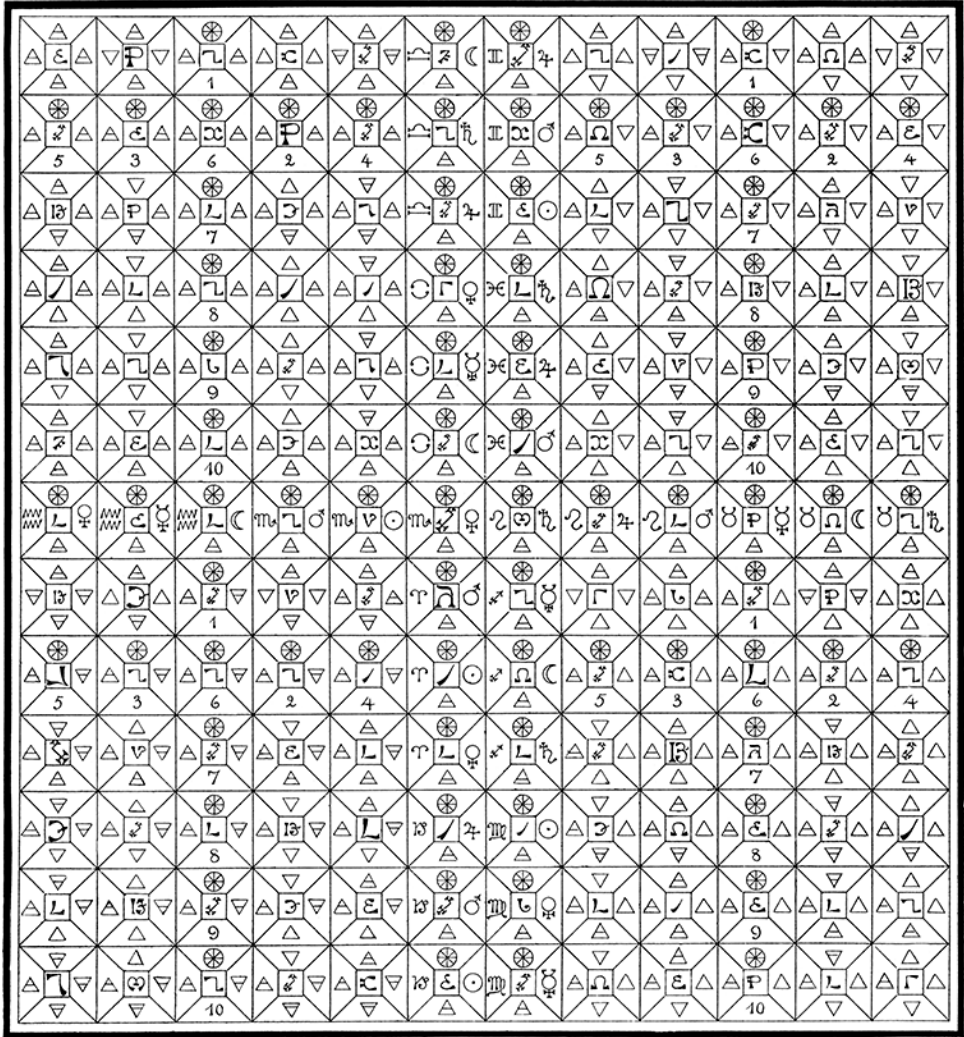


PLATE IV.

THE GREAT WATCH-TOWER OF THE WEST, ATTRIBUTED TO WATER.

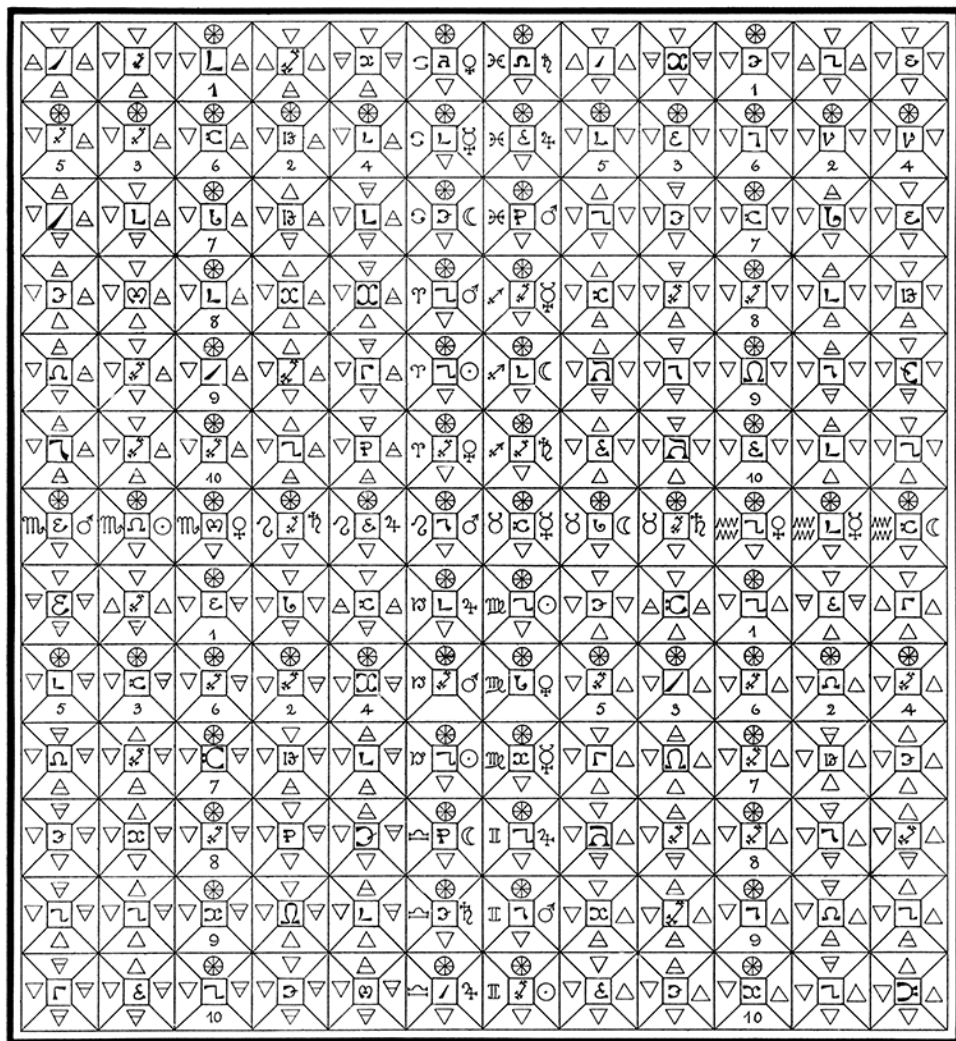


PLATE V.

THE GREAT WATCH-TOWER OF THE NORTH, ATTRIBUTED TO EARTH.

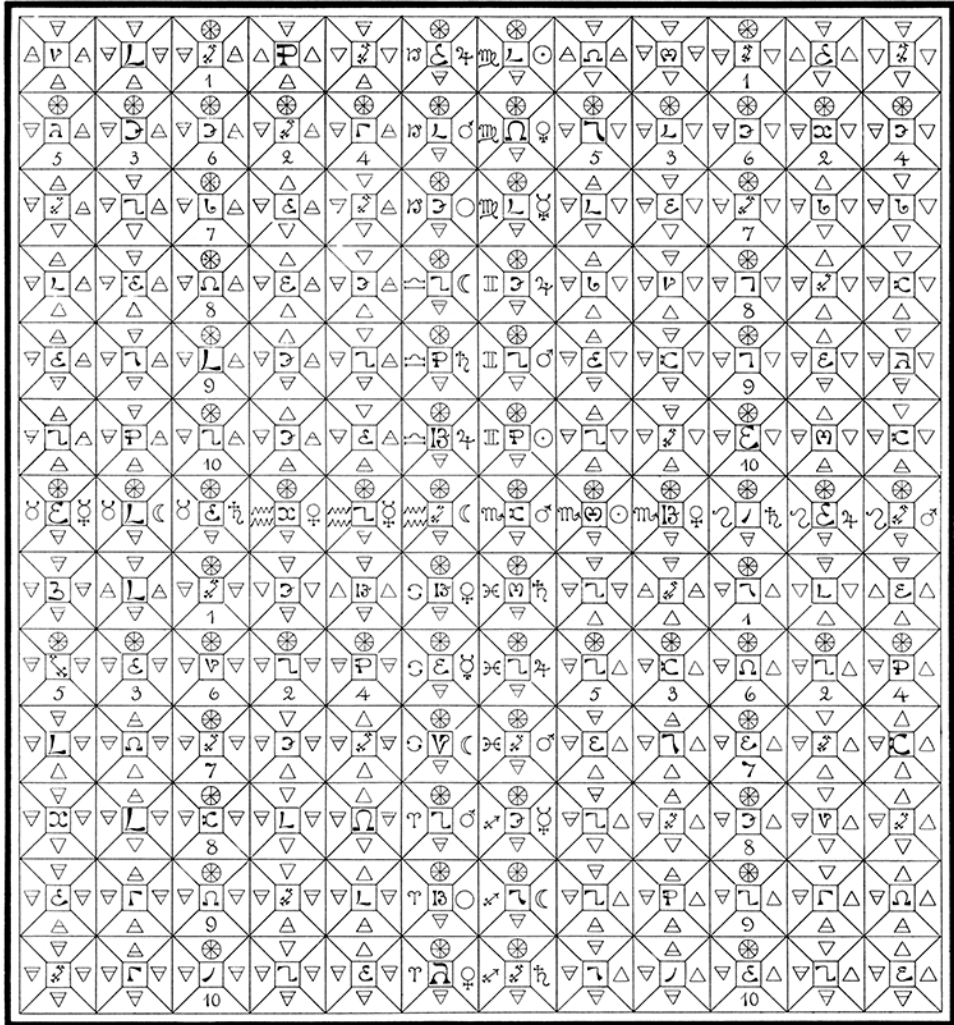


PLATE VI.

THE GREAT WATCH-TOWER OF THE SOUTH, ATTRIBUTED TO FIRE.

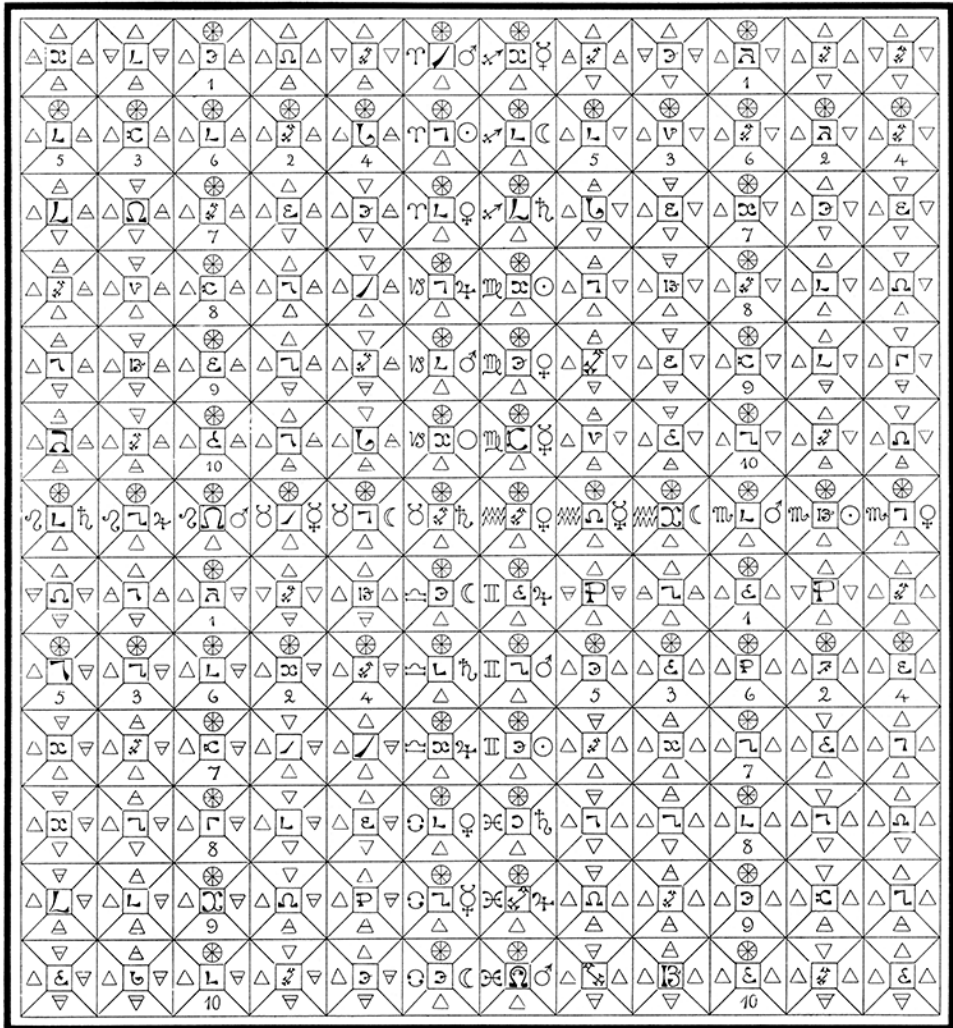


PLATE VII.

THE BLACK CROSS, OR TABLE OF UNION,
 ATTRIBUTED TO SPIRIT.

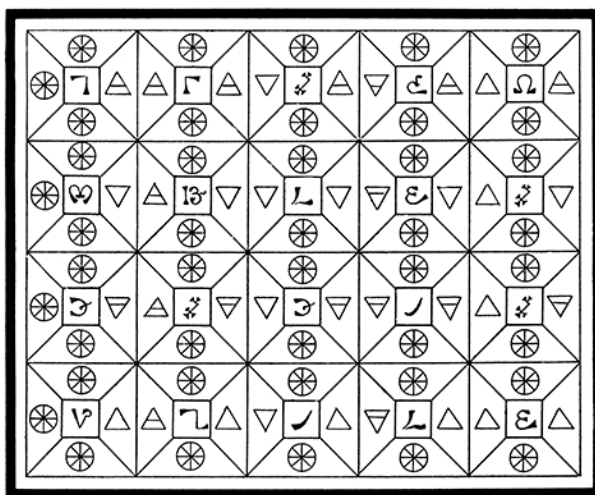


PLATE VIII.

KELLY'S UNIVERSE

1. Linea Spiritus Sancti gives the Three Holy Names of God of 3, 4, and 5 letters respectively.

MPH. ARSL. GAIOL.

2. A whorl around the centre of the Tablet gives the name of the Great Elemental King, RAAGIOSL [similarly for Air BATAIVAH, for Earth ICZHHCAL, for Fire EDLPRNAA].

3. The 3 lines of the central cross of Father, Son, and Holy Ghost give the names of 6 seniors. [Thus the 4 tablets hold 24 "elders," as stated in the Apocalypse.] They are drawn of seven letters, each from the centre to the sides of the tablet.

| | | |
|---------|---|--------------|
| SAIINOV | } | Linea Patris |
| SOAIZNT | | |
| LAOAZRP | } | Linea Filii |
| LIGDISA | | |
| SLGAIOL | } | Linea S.S. |
| LSRAHPM | | |

These three sets of names rule the whole tablet, and must be invoked before specializing in the lesser angles of the sub-elements.

4. The Calvary Crosses.

The name upon the cross read vertically is the name which calls forth the powers of the lesser angle.

NELAPR (water of water)
OLGOTA (air of water)
MALADI (earth of water)
IAAASD (fire of water)

THE EQUINOX

The name read horizontally on the cross is that which compels the evoked force to obedience.

OME^{BB} (water of water)
AALCO (air of water)
OCAAD (earth of water)
ATAPA (fire of water)

5. Above the bar of the Calvary Cross remain in each case four squares. These are allotted to the Kerubim, who must next be invoked.

They are TDIM
DIMT
IMTD

MTDI, being metatheses of these four letters. The initial determines the file governed; *e.g.* TDIM governs the file which reads T(o)ILVR. These angels are most mighty and benevolent. They are ruled by names of God formed by prefixing the appropriate letter from the "black-cross" to their own names.

6. Beneath the bar of the Calvary Cross remain 16 squares not yet accounted for. Here, beneath the presidency of the Kerubim, rule four mighty and benevolent angels—

INGM
LAOC
VSSN
RVOI

7. Triliteral names of demons or elementals are to be formed from these 16 squares, uniting the two letters on either side of the upright of the cross with a letter chosen

KELLY'S UNIVERSE

from the Central Tablet or black cross in accordance with rules which will be given in their due place. Thus GM

IN

OC

LA

et cetera, form bases for these trilateral names.

The following rules explain how the sides of the pyramids of which the squares are formed are attributed to the Sephiroth, Planets, Elements, and Zodiacal signs.

1. Great Central Cross. This has 36 squares, for the decanates of the Zodiac.

On the left side of the Pyramid, Linea Patris has the Cardinal signs, the sign of the Element itself at the top, in the order of Tetragrammaton (Fire, Water, Air, Earth) going upwards.

Linea Filii has the Common signs in the same order.

Linea S.S. has the Cherubic signs, that of the element on the left, in the same order, right to left.

But the order of the decans in each sign is reverse, and thus the planets which fill the right-hand side of the Pyramids go in the first two cases downwards, and in the third from left to right.

The upper sides of the Pyramids are all attributed to the Element of Spirit, the lower sides to the Element of the Tablet.

Each square is also referred to the small card of the Tarot which corresponds to the Decan (see 777).

2. Calvary Crosses.

Each has 10 squares.

The upper sides of the Pyramids are uniformly given to

THE EQUINOX

Spirit, the lower sides to the Sephiroth, in the order shewn. The left-hand sides are attributed to the element of the Tablet, the right-hand sides to the sub-element of the lesser angle.

3. Kerubic Squares.

The upper sides pertain to the element of the Tablet, the lower sides to the sub-element. Right- and left-hand sides in this case correspond, according to a somewhat complex rule which it is unnecessary to give here. The attributions to the Court Cards of the Tarot naturally follow.

4. Lesser Squares.

The upper side of each pyramid is governed by the Kerub standing on the pile above it. The lower side is governed by the Kerub also, but in order descending as they are from right to left above. [See angle of Air of Water; the Kerubs go Earth, Fire, Water, Air (from the square marked D, the fifth from the left in the top rank of the Tablet), and downward the lower sides of the squares marked O, D, E, Z go Earth, Fire, Water, Air.]

The left-hand side refers to the element of the Tablet, the right-hand side to the sub-element of the lesser angle.

5. The Black Cross of Central Tablet.

The upper and lower sides are equally attributed to Spirit.

The left-hand sides to the element of the file, in this order from left to right: Spirit, Air, Water, Earth, Fire.

The right-hand sides to the element of the rank in this order: Air, Water, Earth, Fire.

IV

Follows Plate IX., the Alphabet in which all this is written. It is the Alphabet of the Angelic Language. The

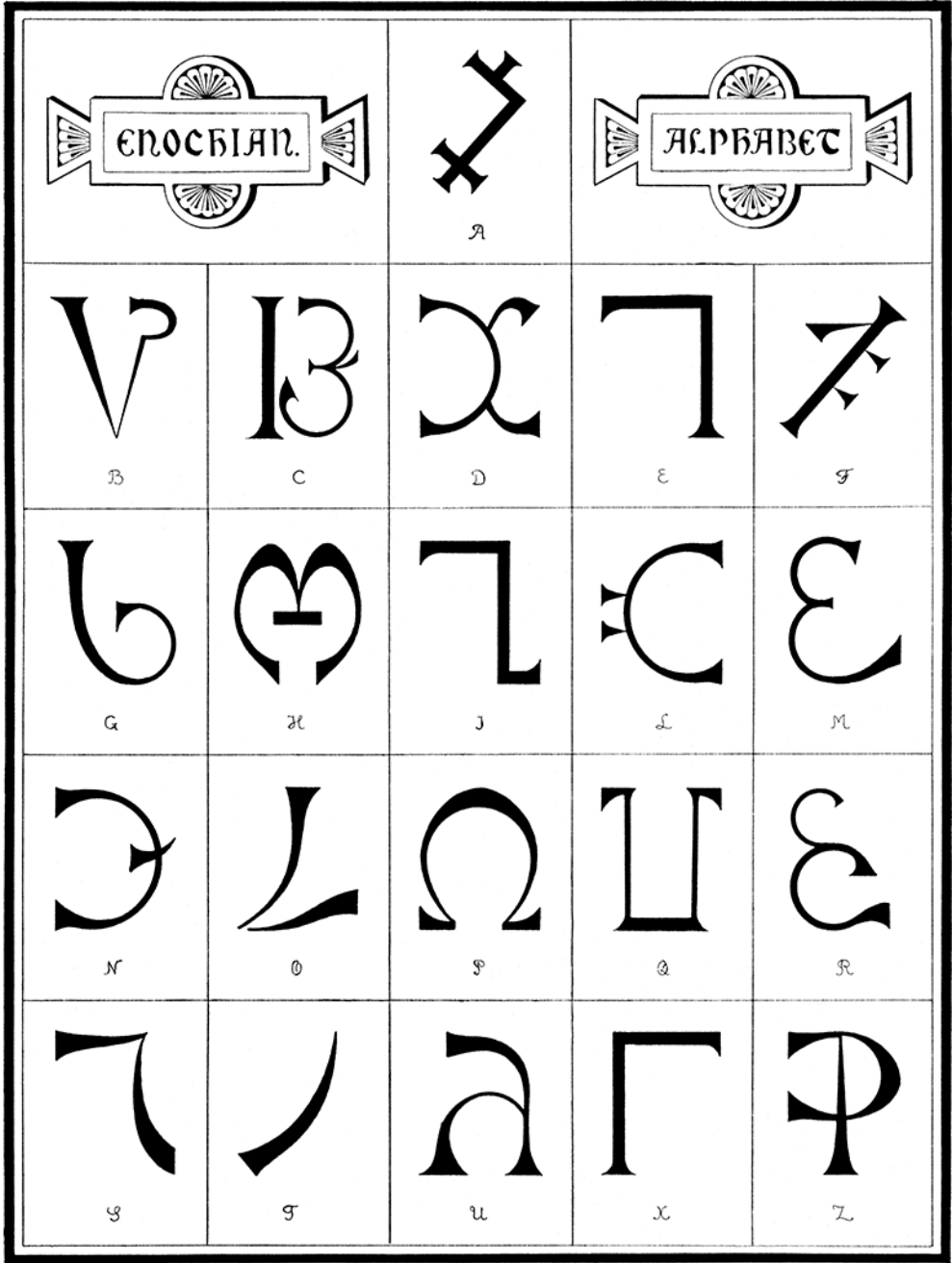


PLATE IX.

KELLY'S UNIVERSE

invocations which we possess in that tongue follow in their due place.

[It is called also Enochian, as these angels claimed to be those which conversed with the "patriarch Enoch" of Jewish fable.]

V.

The Thirty Æthyrs or Aires and their divisions and angels are as follows [We omit for the present consideration of the parts of the earth to which they are stated to correspond, and the question of the attributions to the cardinal points and the Tribes of Israel. These are duly tabulated in Dee's "Liber Scientiæ, Auxilii, et Victoriæ Terrestris."]:—

| NAME OF AIRE. | NAMES OF GOVERNORS. | NUMBERS OF SERVITORS. | IN ALL. |
|---------------|---------------------|--------------------------|----------|
| 1. LIL. | OCCODON . . . | 7209 | } 14,931 |
| | PASCOMB . . . | 2360 | |
| | VALGARS . . . | 5362 | |
| 2. ARN. | DOAGNIS . . . | 3636 | } 15,960 |
| | PACASNA . . . | 2362 | |
| | DIALIVA . . . | 8962 | |
| 3. ZOM. | SAMAPHA . . . | 4400 | } 17,296 |
| | VIROOLI . . . | 3660 | |
| | ANDISPI . . . | 9236 | |
| 4. PAZ. | THOTANF . . . | 2360 | } 11,660 |
| | AXZIARG . . . | 3000 | |
| | POTHNIR . . . | 6300 | |
| 5. LIT. | LAZDIXI . . . | 8630 | } 16,736 |
| | NOCAMAL . . . | 2306 | |
| | TIARPAX . . . | 5802 | |

THE EQUINOX

| NAME OF AIRE. | NAMES OF GOVERNORS. | NUMBERS OF SERVITORS. | IN ALL. |
|---------------|---------------------|--------------------------|----------|
| 6. MAZ. | SAXTOMP . . . | 3620 | } 20,040 |
| | VAVAAMP . . . | 9200 | |
| | ZIRZIRD . . . | 7220 | |
| 7. DEO. | OBTACAS . . . | 6363 | } 20,389 |
| | GENADOL . . . | 7706 | |
| | ASPIAON . . . | 6320 | |
| 8. ZID. | ZAMFRES . . . | 4362 | } 13,900 |
| | TODNAON . . . | 7236 | |
| | PRISTAC . . . | 2302 | |
| 9. ZIP. | ODDIORG . . . | 9996 | } 17,846 |
| | CRALPIR . . . | 3620 | |
| | DOANZIN . . . | 4230 | |
| 10. ZAX. | LEXARPH . . . | 8880 | } 11,727 |
| | COMANAN . . . | 1230 | |
| | TABITOM . . . | 1617 | |

[Note that these 3 names come from the black cross, with the addition of an L. This L is one of the 8 reversed letters in the four watchtowers, the other seven forming the word PARAOAN, *q.v. infra.*]

| NAME OF AIRE. | NAMES OF GOVERNORS. | NUMBERS OF SERVITORS. | IN ALL. |
|---------------|---------------------|--------------------------|----------|
| 11. ICH. | MOLPAND . . . | 3472 | } 15,942 |
| | VANARDA . . . | 7236 | |
| | PONODOL . . . | 5234 | |
| 12. LOE. | TAPAMAL . . . | 2658 | } 13,821 |
| | GEDOONS . . . | 7772 | |
| | AMBRIAL . . . | 3391 | |

SYMBOLIC REPRESENTATION

| NAME OF AIRE. | NAMES OF GOVERNORS. | NUMBERS OF SERVITORS. | IN ALL. |
|---------------|---------------------|--------------------------|----------|
| 13. ZIM. | GECAOND . . . | 8111 | } 15,684 |
| | LAPARIN . . . | 3360 | |
| | DOCEPAX . . . | 4213 | |
| 14. VTA. | TEDOOND . . . | 2673 | } 20,139 |
| | VIVIPOS . . . | 9236 | |
| | OOANAMB . . . | 8230 | |
| 15. OXO. | TAHANDO . . . | 1367 | } 4620 |
| | NOCIABI . . . | 1367 | |
| | TASTOXO . . . | 1886 | |
| 16. LEA. | COCARPT . . . | 9920 | } 28,390 |
| | LANACON . . . | 9230 | |
| | SOCHIAL . . . | 9240 | |
| 17. TAN. | SIGMORF . . . | 7623 | } 17,389 |
| | AYDROPT . . . | 7132 | |
| | TOCARZI . . . | 2634 | |
| 18. ZEN. | NABAOMI . . . | 2346 | } 19,311 |
| | ZAFASAI . . . | 7689 | |
| | YALPAMB . . . | 9276 | |
| 19. POP. | TORZOXI . . . | 6236 | } 15,356 |
| | ABAIOND . . . | 6732 | |
| | OMAGRAP . . . | 2388 | |
| 20. KHR. | ZILDON . . . | 3626 | } 14,889 |
| | PARZIBA . . . | 7629 | |
| | TOTOCAN . . . | 3634 | |
| 21. ASP. | CHIRSPA . . . | 5536 | } 16,929 |
| | TOANTOM . . . | 5635 | |
| | VIXPALG . . . | 5658 | |

THE EQUINOX

| NAME OF AIRE. | NAMES OF GOVERNORS. | NUMBERS OF SERVITORS. | IN ALL. |
|---------------|---------------------|--------------------------|----------|
| 22. LIN. | OZIDAIA . . . | 2232 | } 6925 |
| | PAROAN . . . | 2326 | |
| | CALZIRG . . . | 2367 | |
| 23. TOR. | RONOAMB . . . | 7320 | } 21,915 |
| | ONIZIMP . . . | 7262 | |
| | ZAXANIN . . . | 7333 | |
| 24. NIA. | ORCAMIR . . . | 8200 | } 24,796 |
| | CHIALPS . . . | 8360 | |
| | SOAGEEL . . . | 8236 | |
| 25. VTI. | MIRZIND . . . | 5632 | } 18,201 |
| | OBUAORS . . . | 6333 | |
| | RANGLAM . . . | 6236 | |
| 26. DES. | POPHAND . . . | 9232 | } 18,489 |
| | NIGRANA . . . | 3620 | |
| | BAZCHIM . . . | 5637 | |
| 27. ZAA. | SAZIAMI . . . | 7220 | } 22,043 |
| | MATHVLA . . . | 7560 | |
| | ORPAMB . . . | 7263 | |
| 28. BAG. | LABNIXP . . . | 2360 | } 18,066 |
| | FOCISNI . . . | 7236 | |
| | OXLOPAR . . . | 8200 | |
| 29. RII. | VASTRIM . . . | 9632 | } 21,503 |
| | ODRAXTI . . . | 4236 | |
| | GOMZIAM . . . | 7635 | |

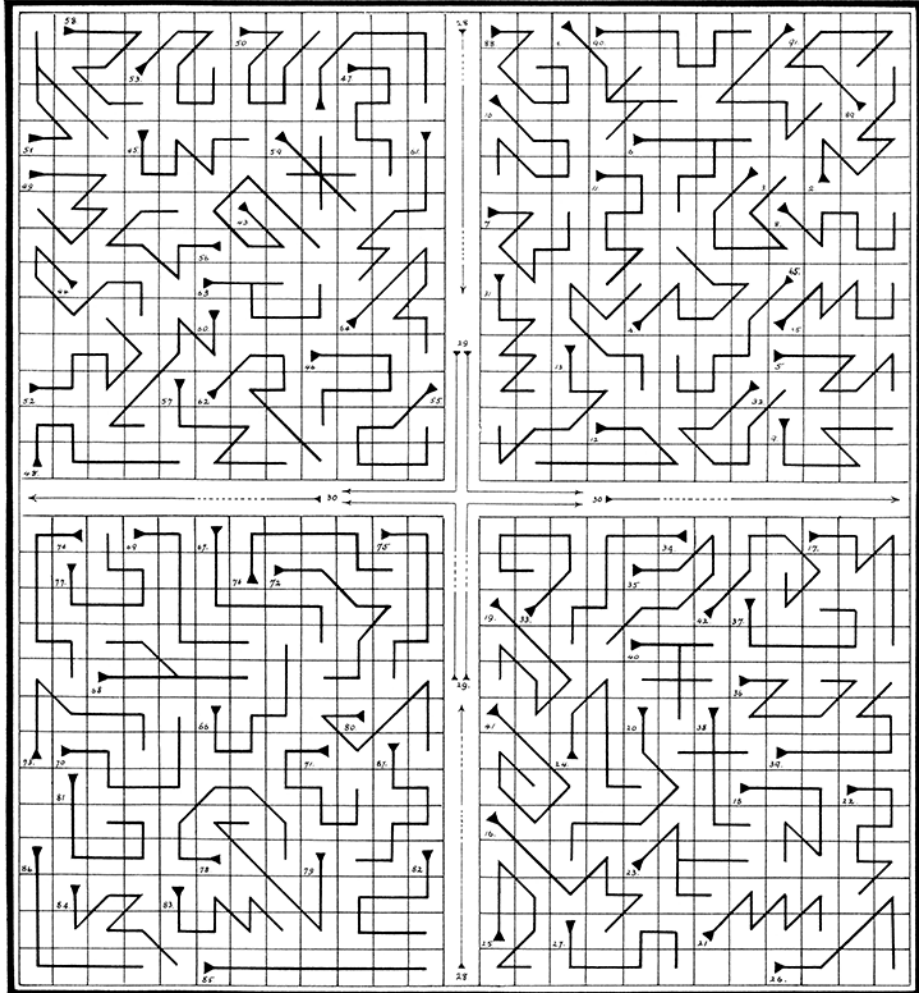


PLATE X.

SYMBOLIC REPRESENTATION

| NAME OF AIRE. | NAMES OF GOVERNORS. | NUMBERS OF SERVITORS. | IN ALL. |
|---------------|---------------------|--------------------------|----------|
| 30. TEX. | TAONGLA . . . | 4632 | } 27,532 |
| | GEMNIMB . . . | 9636 | |
| | ADVORPT . . . | 7632 | |
| | DOZINAL . . . | 5632 | |

Plate X shows us the names of these governors in the four Watch-Towers. Compare with Plate III.

Note that the sigil of each Governor is unique; the four sigils at the corners of Plate X. without the great square are those of the four great Elemental Kings :—

| | |
|-------|------------------|
| Air | Tahaoelaj. |
| Water | Thahebyobeeatan. |
| Earth | Thahaaotahe. |
| Fire | Ohooohaatan. |